



CorePro LEDlinear MV

CorePro LED linear R7S 118mm 6.5-60W 830

CorePro R7S is a retrofit replacement for traditional double-ended linear R7S lamps. Its 'light all around' design delivers light just like a halogen lamp. Within the range you can choose dimmable products which have deep dimming function that enables a cozy ambience when using a dimmable fixture.

Product data

General Information	
Cap-Base	R7S [R7s]
EU RoHS compliant	Yes
Nominal Lifetime (Nom)	20000 h
Switching Cycle	50000X
Technical Type	6.5-60W

Light Technical	
Color Code	830 [CCT of 3000K]
Beam Angle (Nom)	300 °
Luminous Flux (Nom)	806 lm
Color Designation	White (WH)
Correlated Color Temperature (Nom)	3000 K
Color Consistency	<6
Color Rendering Index (Nom)	80
LLMF At End Of Nominal Lifetime (Nom)	70 %

Operating and Electrical	
Input Frequency	50 to 60 Hz
Power (Nom)	6.5 W
Lamp Current (Nom)	65 mA
Wattage Equivalent	60 W
Starting Time (Nom)	0.5 s

Warm Up Time to 60% Light (Nom)	0.5 s
Power Factor (Nom)	0.5
Voltage (Nom)	220-240 V

Controls and Dimming	
Dimmable	No

Mechanical and Housing	
Bulb Finish	Clear

Approval and Application	
Energy Efficiency Label (EEL)	A++
Suitable For Accent Lighting	No
Energy Consumption kWh/1000 h	7 kWh

Product Data	
Full product code	871869652253000
Order product name	CorePro LED linear R7S 118mm 6.5-60W 830
EAN/UPC - Product	8718696522530
Order code	929001186102
Numerator - Quantity Per Pack	1
Numerator - Packs per outer box	10
Material Nr. (12NC)	929001186102

CorePro LEDlinear MV

Net Weight (Piece) 0.050 kg

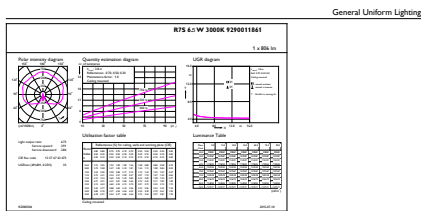
Dimensional drawing

C

Product	D	C
CorePro LED linear R7S 118mm 6.5-60W 830	22.5 mm	118 mm

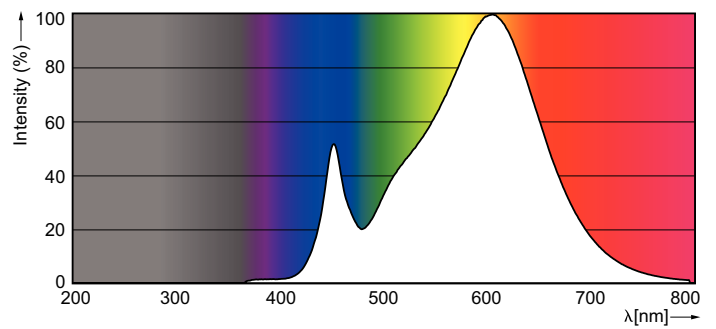
LED 6.5-60W 830 R7S

Photometric data



CandLx Photonics 43 Philips Lighting B.V. Page 111

LEDspot 6.5W R7S Clear 3000K 300D



SDPO_LEDspotM_0040-Spectral Power distribution

CorePro LEDlinear MV

